

Session 4

Cha-Ching Kid\$ At Home

Donate



Parent Guide



As seen on



Brought to you by



© 2020 Prudence Foundation. All rights reserved.



Overview

Here's a little information about Cha-Ching before you get started.

What is Cha-Ching?

Cha-Ching is a financial literacy programme designed for children aged 7 to 12, created by Prudence Foundation. Cha-Ching aims to instil the knowledge, tools and practices needed to help a child become financially responsible. The Cha-Ching programme consists of:

- a series of music videos and comic books developed in partnership with Cartoon Network and Dr. Alice Wilder, a renowned education specialist, and
- a structured school curriculum incorporating activity-based learning, developed in partnership with Junior Achievement (Asia Pacific); one of the world's largest youth-serving NGOs. The Cha-Ching Curriculum is currently being implemented in schools across Asia and Africa.

Why was Cha-Ching created?

Financial literacy is a critical life skill, relevant to everybody, yet it is a subject not often taught in educational systems. Research has shown that behaviours around money habits are typically formed in early childhood. Having a basic understanding of money related matters at an early age, can have a significant impact on an individual's financial future. For that reason, Prudence Foundation developed the Cha-Ching programme to teach children four fundamental money smart concepts: EARN, SAVE, SPEND and DONATE.



How does Cha-Ching Kid\$ At Home work?

The Cha-Ching Kid\$ At Home programme you are about to teach your child has been adapted from the Cha-Ching structured school curriculum, to provide parents with a guided approach to teach fundamental money management skills.

Follow the four Cha-Ching sessions on EARN, SAVE, SPEND and DONATE and set your child on their way to a secure financial future! Each session will guide you through discussion topics and activities that allow your child to put their new financial knowledge into practice.

For further information go to <https://chaching.cartoonnetworkasia.com/>



Session 4: Donate

Hey parents! Welcome to your fourth session with Cha-Ching Kid\$ At Home; **DONATE**.
For this session, here's what we hope to achieve.

Objectives

Your child will consider that **helping people in need will make this world a better place**

They will understand there are **many ways to donate**:
not just through giving money.

They will consider different **scenarios in which they could help**

We've provided Step-by-Step guidance in the following pages to help you take your child on their journey to **Donate**

Time needed for this session

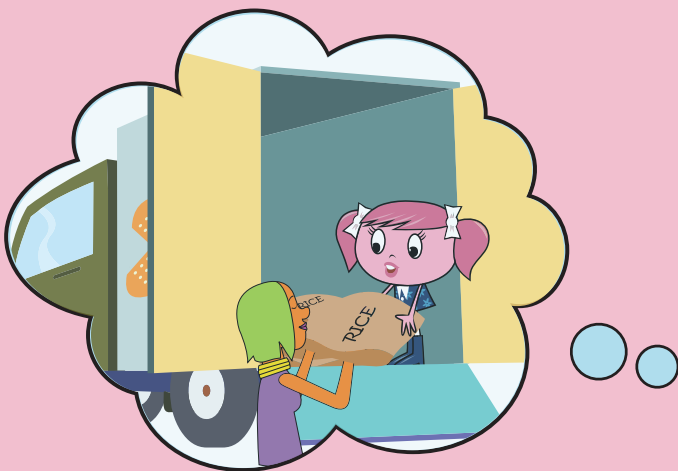
30-40 minutes

Concept

Donate

Skills

-  Listening
-  Observation
-  Analyzing
-  Brainstorm
-  Presentation



Session Outline

Here's a quick outline of the 4 parts to this session :



1. Introduction and Music Video

Watch the Cha-Ching music video with your child: ["Charity"](#).



2. Discuss the Key Concepts

Ask your child what they saw in the video and help them understand what 'Donate' and 'Charity' mean and the different ways there are to 'Give'.



3. Activity Time!

- Use the Scenario Cards, to help your child identify different ways that charity can be provided and what they could do to contribute.
- In the Scenario Worksheet, encourage your child to draw a scenario where they would like to help.



4. Summary

Remind your child that there are different ways to donate and encourage them to start donating.



How to Prepare

- Review the following pages to familiarise yourself with the session.
- Make sure you have access to the Cha-Ching music video link
- Review the key concepts that are defined throughout the guide (page 4).
- If you'd like, print out the Scenario Cards and Worksheet separately.
- Have pens or pencils ready to complete the Worksheet.

1. Introduction and Music Video

Explain to your child that you are going to watch a video about charity.

But first, ask your child the following questions:

- What does **Donate**⁷ mean?
- Have you ever donated? How?
- What kinds of things can you donate?

Quick Answer: Time, items, or money!

- How does it feel to donate? Why?

Introduction

5 minutes

Donate refers to giving time, items and / or money away freely in order to help others.

Watch the CHA-CHING VIDEO to help answer some of these questions.

CHA-CHING VIDEO

[Click here to watch the "Charity" Episode](#)



Cha-Ching Video

3 minutes



2. Discuss the Key Concept

Ask the following questions about the video.

Invite a few answers, and then offer your own.

- What are the ways Charity helps people in the episode?

Summary Answer:

Charity sees an issue on the news about hunger and decides to contribute.

Next, the band reads about a drought and signs up for a charity walk. As Charity cleans up her room, she finds things that she no longer uses, which could be of use to others. Next, we see the band working in a community garden to grow food for a food bank which they then help to distribute. Charity also spends time playing the keyboard for the elderly, giving books to kids and providing food to a family.

- Do the characters in the video get anything in return for what they give?
Is that okay?

Quick Answer: No, the characters did not get anything in return for their charity work. That is okay, because we are making the world a better place!

- How do the characters in the episode feel from giving?

Quick Answer: They feel happy about having helped people, and motivated to continue to help others.

Discussion on Concepts

5 minutes

Concept Discussion

Encourage discussion with your child using the following questions:

- Why do people sometimes need help?

Quick Answer: Some people might experience financial problems or other major problems. Giving is when the community comes together to help!

- Why do people want to help?

Quick Answer: People want to make this world a better place, which helps out everyone in the long run!

- How can you help?

Quick Answer: donate time, items, and / or money.



3. Activity Time

Scenario Cards

Show your child the scenario cards one by one

Ask the following questions:

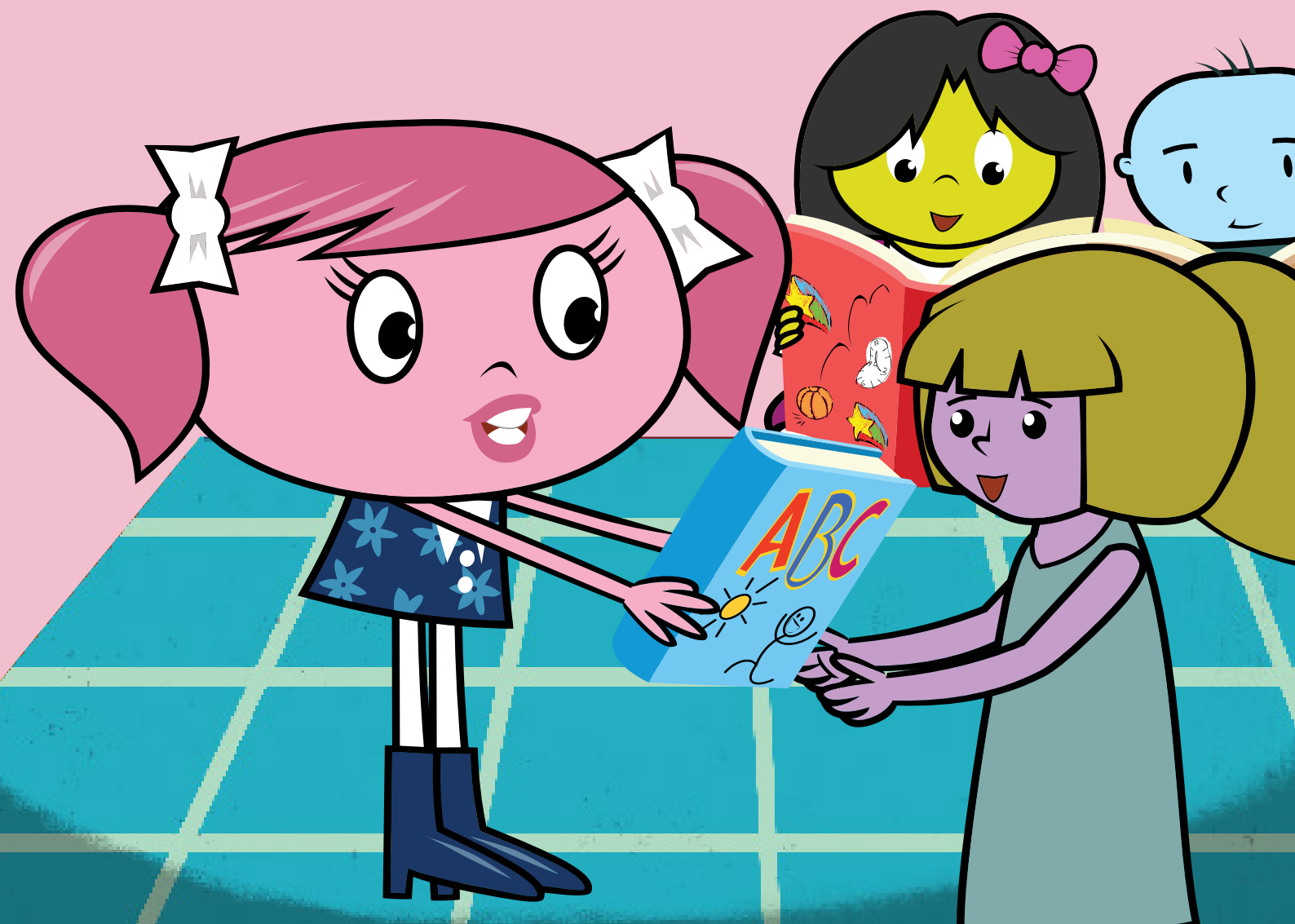
- 'What kind of help is needed here?'
- 'How do you think you could help out if this happened?'

Remind your child that help does not always need to be financial and there are lots of different ways to help.



Activity time

20 minutes



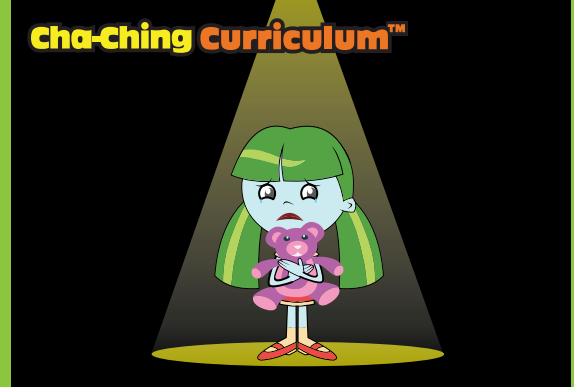
Cha-Ching Curriculum™



Scenario A

During a storm, a man is begging on the street without shelter.

Cha-Ching Curriculum™



Scenario B

A girl has lost her family and no one is taking care of her.

Cha-Ching Curriculum™



Scenario C

A family whose home was burned down.

Cha-Ching Curriculum™



Scenario D

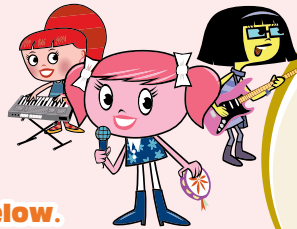
An elderly person living alone, feeling sad and lonely.

Scenario Worksheet

Encourage your child to think of their own scenario in which they could help.

Ask them to draw it on the worksheet and answer the questions.

cha-ching curriculum™ Scenario Worksheet



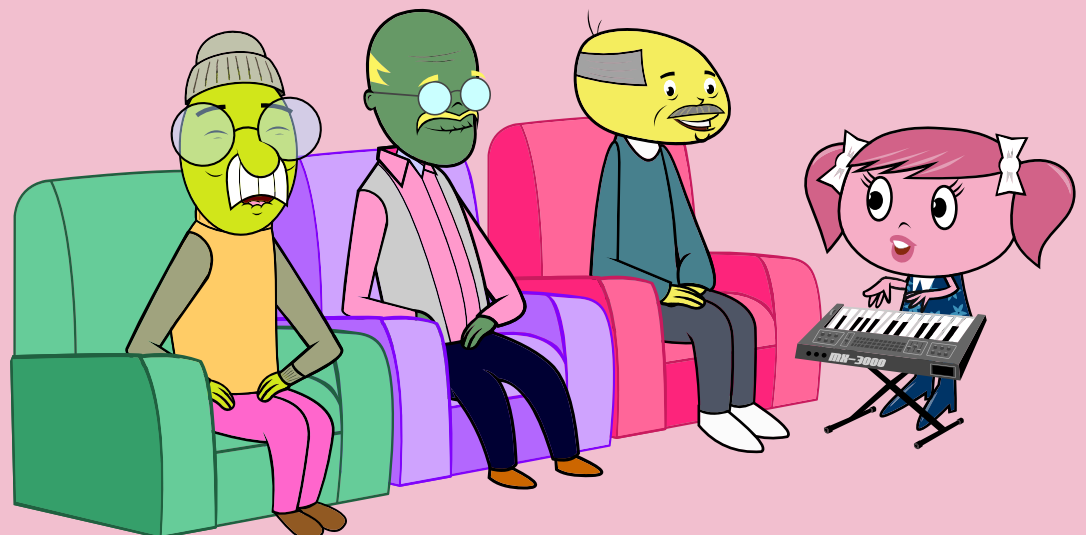
Describe
The Scenario:



Please draw the people in need in the box below.



1. Whom do we want to help?
2. Where are they?
3. Why do they need help?
4. What do they need?
5. How can we help?



4. Summary

Congratulations! You've reached the end of the session.
Here's a quick recap to do with your child:

- What does it mean to **Donate**?
- What are different ways of donating?
- Why do you donate? What's important about it?
- Do you get something in return?

Summary

5 minutes

Encourage your child to start donating in different ways, be it giving time, money, or items.

Optional:

Replay the music video if your child is interested or watch some of the other Cha-Ching episodes on our website

[Click here for more Cha-Ching Episodes](#)



For questions or comments please email:

prudence.foundation@prudential.com.hk



About Prudence Foundation

Prudence Foundation is the community investment arm of Prudential in Asia and Africa. Its mission is to secure the future of communities by enhancing education, health and safety. The Foundation runs regional programmes as well as local programmes in partnership with NGOs, governments and the private sector in order to maximise the impact of its efforts. Prudence Foundation leverages Prudential's long term mindset and geographical scale to make communities safer, more secure and more resilient. The Foundation is a Hong Kong registered charitable entity.

For more information please visit: www.prudencefoundation.com